

# Heritage Series

# maestro



empowering wireless

## Adaptable, powerful and tailor-made modem

Maestro Heritage combines a base unit offering GSM/GPRS/EDGE technologies in an Industrial grade design with pluggable boards catering for diverse Machine to Machine applications, transforming the Heritage into a Multitechnology Gateway. This modular and scalable design concept also features a powerful operating system offering Download Over The Air capabilities and other unique embedded applications.

Being customizable both in terms of hardware and software, the Maestro Heritage modem is the best tailored solution in direct response to customer needs.

### Option boards :

Maestro Heritage base unit will be available with this first series of option boards to serve specific applications.

#### I/O Board

6+6 digital inputs/outputs, 2 analog inputs, optional analog/digital converter  
→ Monitoring and Control

#### Ethernet Board

allows IP connectivity,  
→ Sales & Payment or Home & Security

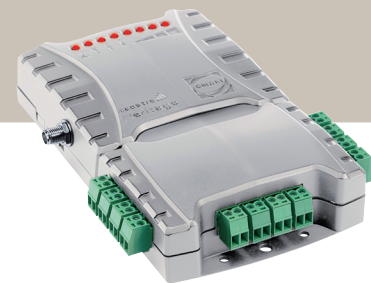
#### GPS Board

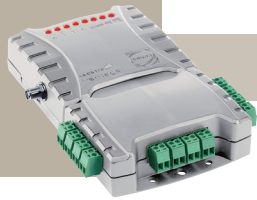
→ Vehicle Remote Management



### On-Demand Customization & Development

Using its embedded Open Platform and Easy to customize option board, Maestro Heritage makes it simple to adapt for any application. Thanks to a dedicated design team, the customer is supported all along the development process of its own board (JDM, OEM design services), therefore enabling him to reduce significantly his solution's time to market.





## Technical information

### GENERAL FEATURES

- Quadband GSM 850/900/1800/1900 MHz
- GPRS class 10 / EDGE class 10
- ETSI GSM Phase 2+ compliant
- LED Bar RSSI (Receive Signal Strength Indication)
- LED indication of Network Registration, Up / Down Data Traffic and EDGE availability
- Expansion slot for add-on module for customised functions
- Din Rail Mountable
- Real time clock backup up by Supercap
- Built-in watchdog chip to prevent modem lock-up
- Control via AT commands (GSM 07.05, GSM 07.07 and Wavecom)
- Maestro's software pre-installed (see below)
- Temperature range:
  - Operational: -20°C to +55°C (ETSI compliant)
  - Functional: 40°C to +85°C
  - Storage: -40°C to +85°C
- Casing: plastic ABS material
- Dimensions: 79 x 84 x 27mm
- Weight: 100g

### ELECTRICAL CHARACTERISTICS

- Supply voltage range: 5-32V DC
- Power consumption
  - GSM 850/900 (PLC 5): 310mA@5V, 50mA@32V
  - DCS 1800/PCS 1900 (PLC 0): 240mA@5V, 40mA@32V
  - GPRS 850/900 CL10 (PCL 5): 520mA@5V, 80mA@32V
  - GPRS 1800/1900 CL10 (PCL 0): 390mA@5V, 70mA@32V
  - Idle consumption: 80mA@5V, 18mA@32V
- Output power:
  - 2W for GSM850/900 GPRS850/900
  - 1W for GSM1800/1900 GPRS1800/1900
  - 0.5W for EGPRS 850/900
  - 0.4W for EGPRS 1800/1900

### GPRS / EGPRS

- GPRS Multislot class 10 / EGPRS Multislot class 10
- Mobile station class B
- PBBC support
- Coding schemes CS1 to CS4 for GPRS
- Coding schemes MCS1 to MCS9 for EGPRS

### CSD DATA TRANSMISSION

- Asynchronous, Transparent & Non Transparent
- CSD up to 14.4 kbps

### SMS

- Point-to-point MO/MT
- Text & PDU
- Cell Broadcast

### FAX

- Fax G3 (class 1 & class2)

### INTERFACES

- Antenna: SMA female connector
- RS232 on 9 pin female Sub-D connector
- DC power supply connector
- SIM card: 1.8V / 3V
- Expansion slot with 50 pin CF type connector for mounting add-on module

### SOFTWARE SUPPORT

Processor: Wavecom Wireless CPU (Memory: 256KB SRAM & 1.5MB Flash)

OS : Wavecom's OPEN AT

#### Pre-installed features

- AUTOTCP
- AT Command Over SMS
- Modem status check & monitoring
- Command Line Interface to program sequence of actions driven by events
- Download Over The Air (DOTA) for application software upgrade
- Download Over The Air (DOTA) for firmware upgrade (available at a later stage)

#### Optional features

- Wireless gateway for Modbus RTU protocol
- Modbus Master with SMS server
- Modbus I/O

### CERTIFICATIONS

CE

R&TTE

RoHS compliant

### Distributor's Contact



Maestro Wireless Solutions Ltd  
 3603-9, 36/F  
 118 Connaught Road West  
 Hong Kong  
 Tel: (852) 2869 0688  
 Fax: (852) 2525 4701  
 contact@maestro-wireless.com  
 www.maestro-wireless.com

Copyright Maestro Wireless Solutions Limited.  
 We reserve the right at any time and without prior notice to modify or improve the modems and the services offered, the same applies to the accessories which could also be withdrawn.  
 Designed by SEVENMACHINE (www.sevenmachine.com)

