



μWEBox eRouter PSTN

μWEBox eRouter frees equipment from the restrictions imposed by wired LAN connections to drive new business.

- Fixed line PSTN router provides connectivity to LAN devices over the dialup network
- Available in a rugged aluminium enclosure
- Specifically designed for M2M applications

overview

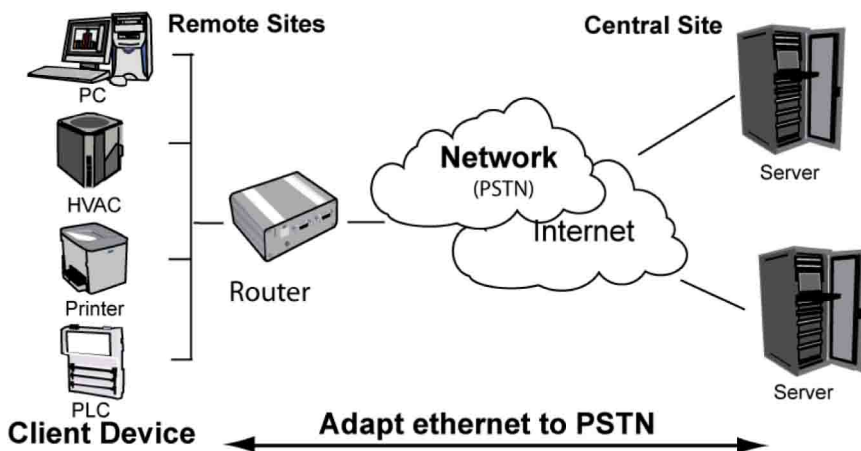
Introducing the μWEBox eRouter PSTN specifically designed for machine-to-machine (M2M) applications. It is ideal for integration within OEM equipment or for adapting existing field-based equipment into an end-to-end system over a Wide Area Network (WAN). The μWEBox eRouter PSTN enables remote Ethernet devices to communicate over PSTN networks. Easy to install and configure it provides access to equipment in remote locations without the complexity of using the end customer's private network. The μWEBox eRouter PSTN has been designed for robust and resilient operation and are housed in a rugged aluminium enclosure. Comtech M2M offers design, license and private label branding to meet your product lifetime needs.

remote networking solution

How difficult is it for you to gain access to your equipment through your customer's LAN infrastructure? The first challenge is getting the agreement to install an "alien machine" on a secure IT network where it can be perceived as a fundamental threat to the security and integrity of the network as a whole. Even with this in place, the installation and maintenance creates additional cost and workload due to the reliance on the end customer and his associated work practices. The μWEBox eRouter PSTN eliminates these problems by creating a standalone network with wide area access through PSTN. It provides ease of installation to reduce the reliance on the end customer and enables direct access to remote equipment for control and monitoring purposes. With a growing adoption of Ethernet interfaces integrated directly onboard equipment, the μWEBox eRouter PSTN offers the ability to obtain remote access over PSTN for standalone access or secondary network back up.

benefits

- Standalone—Easy access
- Eliminate local wiring
- Reduce customer reliance
- Rapid installation
- Easy to relocate
- Increased profitability
- Ease of connectivity to remote locations
- Rapid Return on Investment
- Fast time to market
- Reduce costs
- Reduce downtime
- Improve customer service
- Ease of upgradability
- Remove fixed restrictions by enabling applications mobility



specifications

routing	
Configuration	Ethernet Telnet session
PPP	PPP wrapping of TCP/IP data—up to 10 TCP sockets
NAT	Network Address Translation between local Ethernet IP & dynamically assigned IP address from network
Dial Out Mode	Multiple Ethernet Clients initiate calls on presence of data. NAT is performed
Dial In Mode	Multiple Ethernet Servers terminate incoming PSTN calls. No NAT is performed
Always Connected Mode	Multiple Ethernet Client devices and a single Ethernet Server device remain always-on PSTN. Port forwarding to the single server device and NAT is performed
protocols	
Routing	TCP, IP, UDP PPP DNS NAT, IP Forwarding DHCP Server ARP PING
PSTN and ethernet network interface	
PSTN	Bell and ITU V.90 56Kbps V.42 Error Correction V.42bis data compression Pulse and DTMF autodial Auto Answer on Ring Detect RJ11 connector Approved to S002 Australia Meets TBR-21 in Europe FCC part 15 (USA) planned
Ethernet	10Base-T (10Mbps) RJ45 connector
physical interface connectors	
Debug	DB9 RS232 connector
Ethernet	RJ45
PSTN	RJ11
Power	8-36VDC Molex mini-fit
Indicators	4 LED's (Power and status)
Size	105 x 115 x 45mm approx.
DC characteristics	
V (supply)	8-36V DC.
Debug	Serial RS232
Ethernet	10 Base-T
conformance	
Europe	<ul style="list-style-type: none"> • CE (R&TTE, LVD, EMC) • RoHS • E-Mark
environment	
Operation	20°C to +70°C
Storage	-40°C to +85°C
Humidity	95% at +40°C non-condensing

tools

The μ WEBox eRouter is released together with a Starter Kit. This provides the μ WEBox eRouter with all the accessories necessary for rapid evaluation.

ordering information

Order code	Description
FR06000215	μ WEBox eRouter PSTN (ROHS)
FR06000216	μ WEBox eRouter PSTN (ROHS) Starter Kit
Contact Comtech	μ WEBox eRouter PSTN FCC
Contact Comtech	μ WEBox eRouter PSTN FCC Starter Kit
Contact Comtech	for your customisation needs

accessories

Order code	Description
CABLE-DATA	Serial cable 9w to 9w
CABLE-001	Ethernet cross over cable
PSU-0012	110/230VAC to 9v DC/1.5A Power Supply
CABLE-BT431-RJ11	PSTN Cable
CASE-0013/M	1 off Box Mounting Bracket (inc screw)
CABLE-027	Input filter cable*
	*NOTE: This must be used if the unit is powered from a low voltage source

related documentation

Modem/Router Family brochure
 μ WEBox eRouter User Manual

about Comtech M2M

Comtech M2M is the UK's leading machine to machine (M2M) communication company. M2M is the ability to connect remote devices with central IT systems and business processes without human intervention. Comtech M2M has created a robust communication platform for monitoring, controlling and managing any remote equipment across wide ranging industries. *extra...* is a wireless digital signage application that operates on the proven wireless communication infrastructure.

contact

Adaptive Modules Ltd
148 Portland Road
Hove, West Sussex
BN3 5QL, United Kingdom.
T. 01273 248977 F. 01273 267955

sales@adaptivemodules.com www.adaptivemodules.co.uk



Copyright ©2008 Amscreen Group Ltd. Comtech M2M is a division of Amscreen Group Ltd. All rights reserved. The Comtech logo, extra logo, μ WEB, μ WEAVE, extra... are trademarks or registered trademarks of Amscreen Group Ltd. Specifications subject to change without notice. UK patents granted. UK and International patents pending.