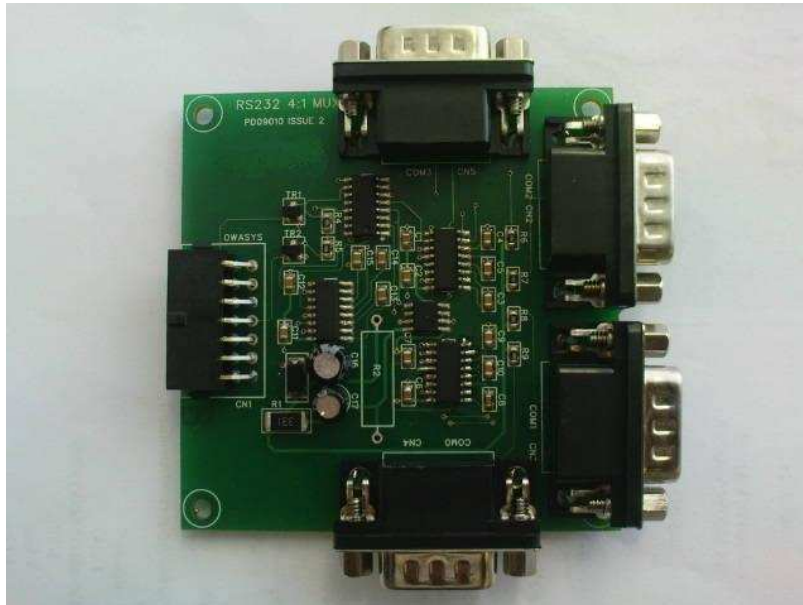


RS232 4-1 D-Type Serial Port Multiplexer



Technical Specification:

4 Channels RS232 Multiplexer – RS232 signal levels

DC Supply Range: 12V +/- 10%

Overall Dimensions: – 85mm x 85mm approx

RS232 Pin Out

- 2 - RX_IN
- 3 - TX_OUT
- 4 - +12V
- 5 - GND

14 way Mate N Lok

4	SEL_A (3-5v nominal)
5	GND
6	RX (RS232 levels)
7	+12 Volts
11	SEL_B (3-5V nominal)
13	TX (RS232 levels)

Multiplexer Logic

SEL_A	SEL_B	Port Select
0	0	1
1	0	2
0	1	3
1	1	4